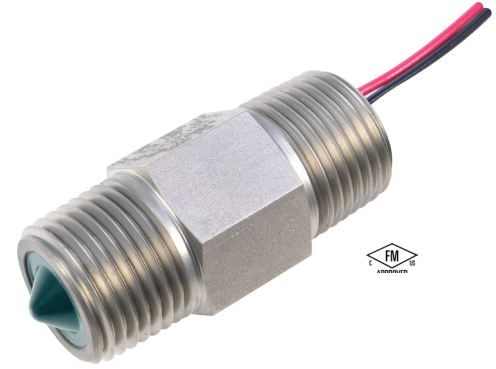


ELS-1150XP

FM-Approved Explosion-Proof

The explosion-proof ELS-1150XP series is designed for use in areas containing flammable bases or vapors in quantities sufficient to produce explosive or ignitable mixtures. It is FM-Approved for use with virtually all hydrocarbon based liquids, as well as with combustible atmospheres containing dusts of coal, coke, flour, starch of other grain.

These solid-state level sensors are available in nickel-plated carbon steel or stainless steel. The strong fused glass prism eliminates leak potential and is capable of handling high temperature and pressure applications up to 5000 psi. The compact size of the sensor makes them ideal candidates for monitoring the small, pressurized vessels found in oil, gas and petrochem environments.



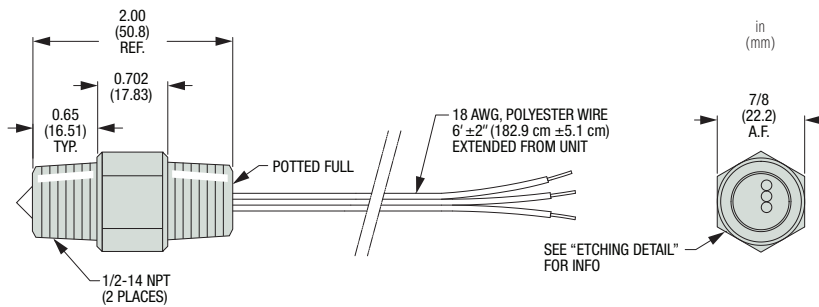
Applications

- Storage Tank Level Monitoring
- Remote Level Monitoring
- Chemical Injection
- Well Head Automation

Specifications

Mounting	1/2-14 NPT
Materials	
Housing	Nickel-Plated Carbon Steel or Stainless Steel
Prism	Fused Glass
Max. Operating Pressure	0 to 5000 psi, 10000 psi Proof (0 to 344.7 bar, 689.5 bar Proof)
Operating Temperature	-40°F to +257°F (-40°C to +125°C)
Input Voltage	5-28 VDC ±5%
Current Consumption	~1 mA
Output	Open Collector Output, 100 mA Sink @ 30 VDC, Max.; 100 mA Source, Max.
Electrical Termination	18 AWG, Polyester, 6' ±2" Extended Lead Wires
Approvals	FM Approved Class I, Div. I Groups A, B, C, D Class II/III, Groups E, F, G

Dimensions

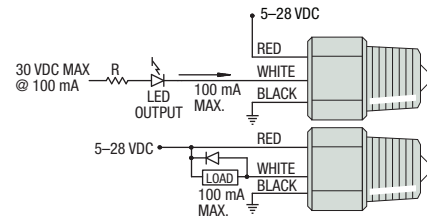


How To Order

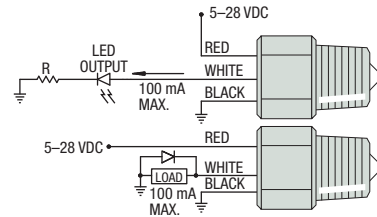
Specify Part Number based on Output Logic State and material required.

Output Logic State	Nickel-Plated Steel Housing	Stainless Steel Housing
Wet - Sink	227201	227257
Dry - Sink	227202	227256
Wet - Sourcing	227203	227255
Dry - Sourcing	227204	227254

Wiring Diagrams - Typical Sinking



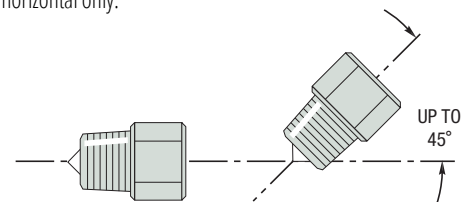
Sourcing



Note: Inductive loads must be diode suppressed.

Mounting Attitude

These units must be mounted horizontally or up to 45° from horizontal only.



Extended Power and Switching Capabilities of 12 VDC Models with Gems.

Converts TTL output signal to 5 Amp relay output. Available as open circuit board or mounted in a NEMA 4X enclosure (pictured). See Page A-28.

